

SCUPPER SERIES

Angled Roof Outlets

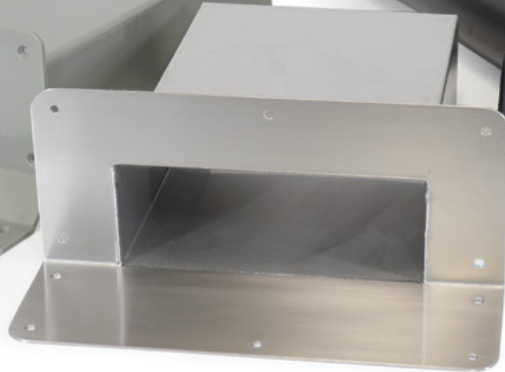
HDPE
PLASTIC



SYNTHETIC
RUBBER



STAINLESS
STEEL

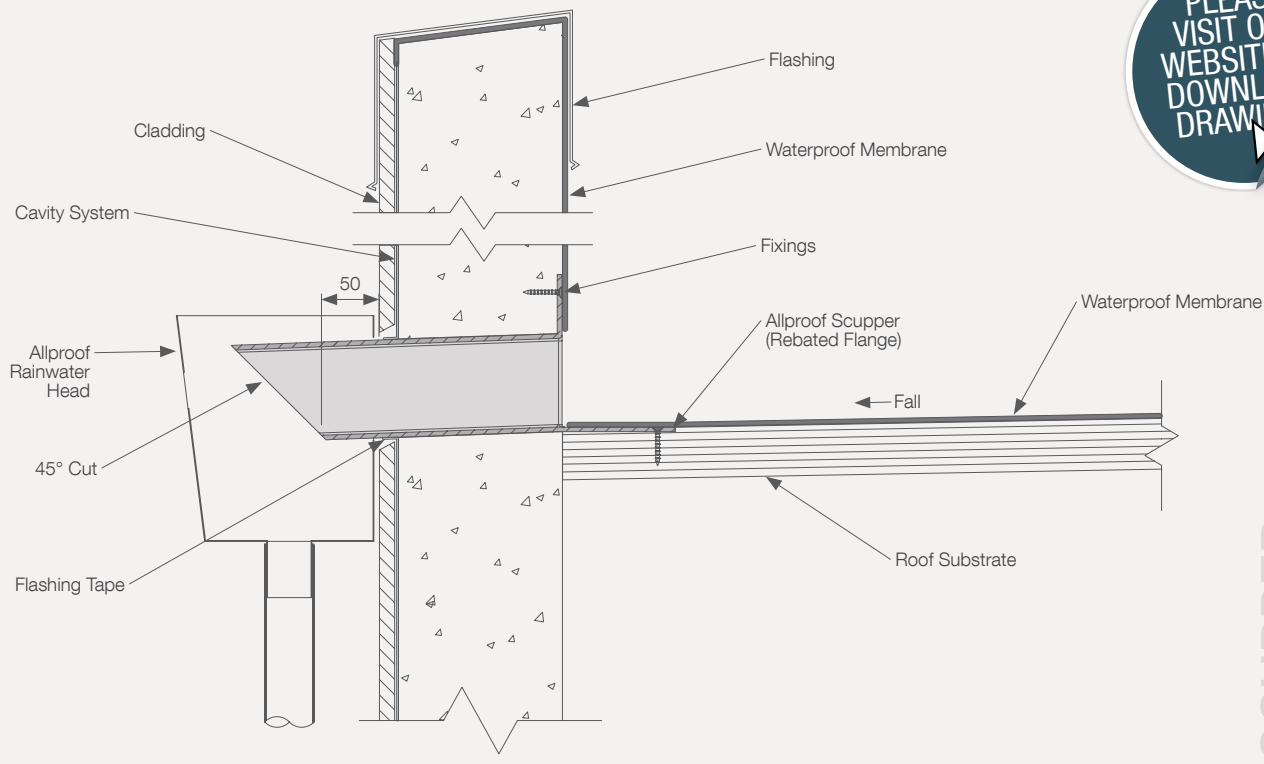


Allproof Scupper Series

- > Stainless Steel, HDPE Plastic or Synthetic Rubber
- > High resistance to UV light
- > Large flange area for waterproof membrane to bond to
- > Compatible with torch-on membranes
- > Application as a horizontal drain with free waterfall or discharge into an Allproof Rainwater Head

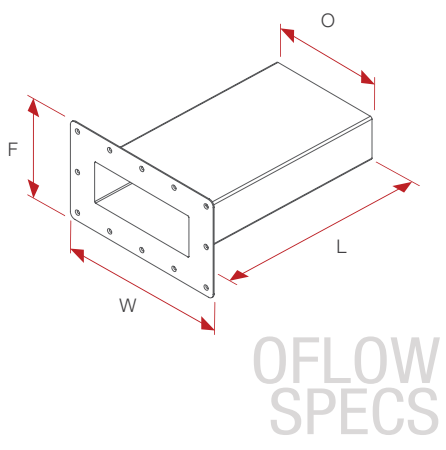
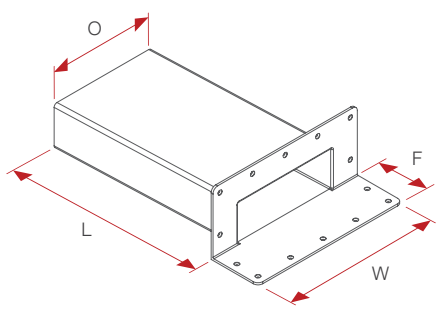


Parapets also available, please visit allproof.com for more details.



SCUPPER
INSTALL

SCUPPER SPECS



OFLOW SPECS

HDPE PLASTIC

Code	Description	W (mm)	L (mm)	O (mm)	F (mm)
SCUP 200x75	Scupper 200x75x90 degree	308	385	200x75	100
SCUP 200x75F	Scupper 200x75x25 Fillet 90 Degree	308	385	200x75	100
OFLOW200x75	Overflow 200x75mm Scupper	308	385	200x75	183

STAINLESS STEEL

Code	Description	W (mm)	L (mm)	O (mm)	F (mm)
SCUP 200x75SS	Scupper 200x75x90 degree	308	385	200x75	100
SCUP 200x75FSS	Scupper 200x75x25 Fillet 90 Degree	308	385	200x75	100
OFLOW200x75 SS	Overflow 200x75mm Scupper SS	308	385	200x75	183

IGOM-EE SYNTHETIC RUBBER

Code	Description	W (mm)	L (mm)	O (mm)	F (mm)
SCUPPER 50	50 x 40mm Scupper Drain	285	310	50x40	120
SCUPPER 65	54 x 100mm Scupper Drain	345	500	54x100	120
SCUPPER 100	100 x 100mm Square Scupper Drain	345	500	100x100	120
SCUP RD 80	80mm Round Scupper Drain Round	345	500	80Ø	120
SCUP RD 100	100mm Round Scupper Drain	345	500	100Ø	120

INSTALLATION METHOD

1. Insert the Scupper Drain in the hole through the wall and at the same time mark the point to cut in relation to the thickness of the wall.
2. The Scupper should be installed with a gradient of 3°.
3. Fasten the Scupper to substrate mechanically or with a construction adhesive/sealant.
4. When installing into rainwater head, the cutting of the Scupper shaft shall be cut at 45° with the top edge longer than the bottom.
5. Lay waterproofing membrane over Scupper outlet. Welding or adhering the membrane to the Scupper flange can be done with heat torch or adhesives depending on membrane type. Ensure adhesion to whole flange surface.
6. Cut membrane around or dish into Scupper shaft. If using Butyl Rubber, always ensure a lap tape is used on all exposed surfaces.



See more Allproof products at allproof.com