

Sealco
Waterproofing Systems

BituBOND Peel & Stick



BondSEAL Peel & Stick Tanking

PRODUCT DESCRIPTION

BituBOND BondSEAL® is a self-adhesive SBS modified bitumen damp- proof membrane (DPM) designed to protect concrete foundations and vertical walls from aggressive soil attack, dampness and vapour transmission.

BituBOND BondSEAL® is a flexible laminated sheet, comprised of a multi-layer high density cross laminated polyethylene film with a backing of self-adhesive rubber modified bitumen, protected with a silicon coated release film.

WHY BITUBOND BONDSEAL®

The BituBOND BondSEAL® membrane has extensive usage and a proven reputation in waterproofing. BituBOND BondSEAL® has excellent puncture resistance and adhesion properties.

BituBOND BondSEAL® is one of the few self-adhesive membranes that comes with a selvage edge protected by a release paper. This paper ensures the lap area is kept perfectly clean to give an intimate bitumen-to-bitumen seal at the lap.



BituBOND BondSEAL Installed

IN PARTICULAR, BITUBOND BONDSEAL®

- Has excellent self-adhesive qualities.
- Is tear and puncture resistant.
- Is easy to apply.
- Has protected lap selvage.
- Is BRANZ Appraised,

AREAS OF USE

BituBOND BondSEAL® is an ideal membrane for damp-proofing foundations, walls, bridges, viaducts and tunnels. BituBOND BondSEAL® can be used on both concrete and polystyrene substrates. It is also recommended for use under composite shingles and roof tiles.

BituBOND BondSEAL® can also be used where a concrete topping is applied. Contact WPS for technical details.

BITUBOND® MATERIAL SPECIFICATIONS

| | |
|---|---|
| Membrane Thickness | 1.6mm |
| Roll Width | 1m |
| Roll Length | 20m |
| Carrier | cross laminated polyethylene |
| Softening Point (ASTM D-36) | 95°C |
| Cold Flexibility (UEA tc 31) | -25°C |
| Water Absorption (ASTM D570) | 0.14% after 24 hours 0.16% after 35 days |
| Water Vapour Transmission (ASTM E96:95) | less than 0.2g/hr/m² |
| Tensile Strength (ASTM D882:97) | 40N/mm² |
| Elongation (ASTM D882:97) | 490% |
| Puncture Resistance (ASTM E154:99) | 370N |
| Adhesion Strength (ASTM 1000:93) | 55N/25mm |

PRODUCT LIMITATION

BituBOND BondSEAL®, as with any self-adhesive membrane, should not be used for high hydrostatic pressures.

When tanking under higher hydrostatic situations, the BituFLAME® torch-on system should be used. Higher hydrostatic pressures are normally present in deep site excavations near known water sources such as ponds, lagoons, rivers, lakes, and springs and in coastal regions.

DURABILITY

When fixed according to specification, the BituBOND BondSEAL® system will meet the NZBC B2.3.1(a) requirements of 50 year durability.

The durability opinion given by BRANZ for the BituBOND BondSEAL® system states that when installed and maintained in accordance with the certificate, the system is expected to have a service life of at least 50 years, provided it is protected from sunlight and UV radiation.

BRANZ APPRAISED

The BituBOND BondSEAL® system is BRANZ appraised.

Please contact Sealco Limited for a copy of these certificates. Certificates are also available for download from our website

www.sealco.co.nz



Full system specifications, drawings & installation information can be viewed and downloaded from the TankSEAL page on our website:

www.sealco.co.nz

INSTALLING BITUBOND BONDSEAL®

Pre-cut the required quantity of BituBOND BondSEAL® to length and lay out close to the installation area. This will allow the BituBOND BondSEAL® to relax. Do not install BituBOND BondSEAL® when temperatures are below 5°C.

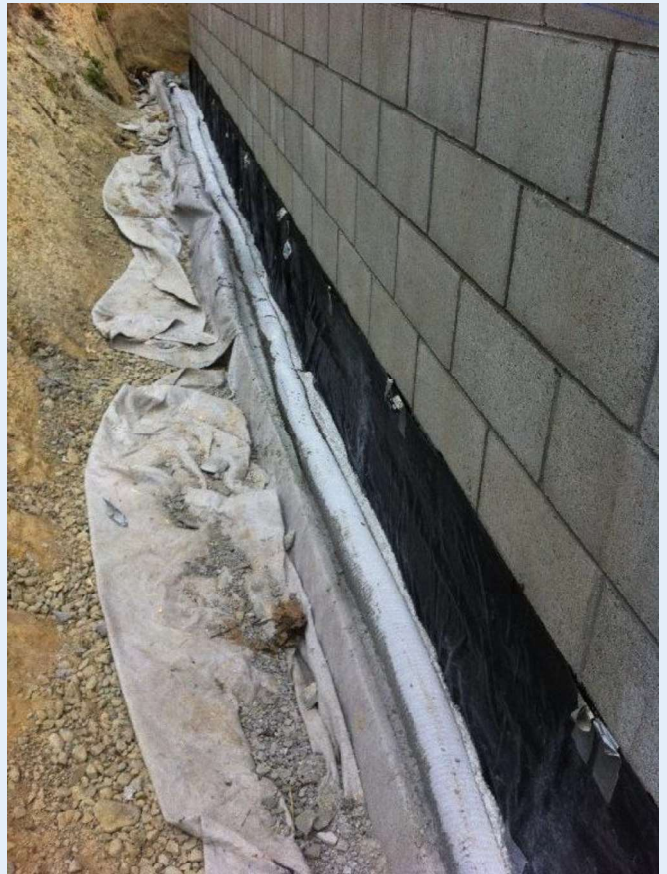
Pull the release paper back approximately 200mm and apply one of the top corners to the substrate. Plumb the BituBOND BondSEAL® and rub across the top edge sticking the BituBOND BondSEAL® to the substrate.

Carefully pull the release paper downwards rubbing the BituBOND BondSEAL® into place, continuing until the BituBOND BondSEAL® drop is completely installed. Roll or broom over the BituBOND BondSEAL® surface to ensure good contact with the substrate. Ensure there are no creases.

Remove the selvedge release paper on the BituBOND BondSEAL® just installed, to get ready for the next sheet. Install the next sheet by removing 200mm of the release paper and place on the exposed selvedge. Use the selvedge as a guide to ensure subsequent sheets are plumb. Over-roll with the lap area with a hand roller to ensure a good seal.

BituBOND BondSEAL® must be fully bonded onto the concrete with 100mm side laps and 150mm end laps, and seamed by a roller. Make sure that foreign matter does not contaminate these laps.

Use a hot air gun to seal and patch any cuts, and if required to seal any creases, or when installing in very cold conditions.



BituBOND BondSEAL installed under roofing tiles



The information contained in this brochure is based on current manufacturer information. No guarantees of its accuracy is made or implied, nor is responsibility taken for use to which this information may be utilised.

Sealco reserves the right to update this information without prior notice.

All Sealco product brands are Registered Trademarked to Sealco Waterproofing Systems Ltd.



System Components

BITUPRIME PRIMER

A solvent-based, fast-drying bituminous primer designed to penetrate concrete surfaces and provide a bondable surface. BituPRIME® is available in a 20ltr metal pail.

BITUBOND BONDSEAL PRIMER

Water-based pressure-sensitive bitumen adhesive for use on polystyrene substrates, or when installing onto concrete or block substrates in cold conditions. BituBOND BondSEAL® is supplied in a 20ltr plastic pail.

BITUBOND BONDSEAL® TANKSEAL MEMBRANE

A self-adhesive elastomeric bitumen membrane with high adhesive properties. BituBOND BondSEAL® has a black finish on the top side with a polyethylene foil, and has a siliconized release paper backing on the bottom side and along the lap edge.

- Nominal thickness: 1.6mm.
- Nominal roll size: 1m x 20m.

SEPARATION LAYERS

Polyethylene film at least 150 microns thick.

PROTECTION BOARDS

Protection boards must be a minimum of 3mm thick core flute over lapped 50mm sheet joints and seal taped.

BACKFILLING MATERIALS

Includes a granular, free-draining sand or natural soil, free from stones larger than 30mm in size and/or sharp stones. The back fall material is capped with impervious clay.

EXPANSION JOINTS

The expansion joint covering must be custom-designed to meet the specific stresses expected, and be compatible with BituBOND BondSEAL® self-adhesive membranes.

RAWSEAL WATERSTOPS

A high density sodium bentonite water stop. Installed into preformed rebates within the concrete joint, or nailed/glued into position. RawSEAL is available in 20mm x 25mm

BITUMEN SEALANT

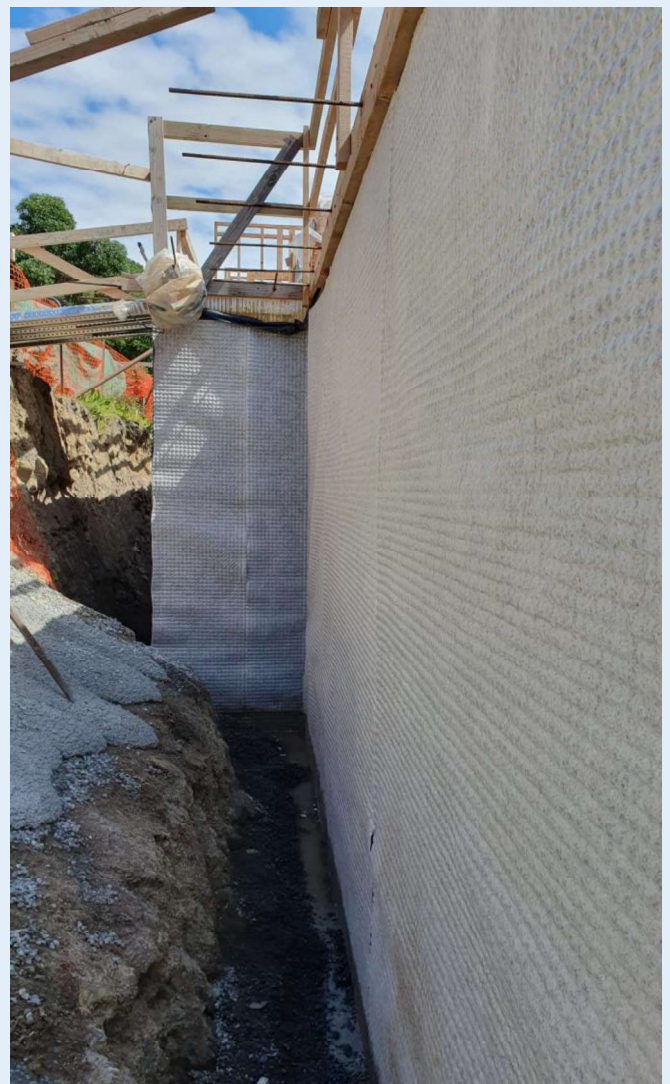
A single component sealant based on bitumen and rubber. Cures to a plastic-elastic seal by evaporation of the solvents.

DRAINSEAL PROTECTION BOARDS

DESCRIPTION

DrainSEAL G-Drain is an extruded high-density polyethylene (HDPE) studded membrane with a mechanical edge-joining system, two rows of overlap connections to seal and polypropylene geotextile to filter the soil and protect the membrane.

DrainSEAL G-Drain protects the retaining wall against water and protects against ingrown plant roots, soil/stones and corrosion caused by chemical compounds present in the water, such as sulphates and chlorides; ensures drainage of water accumulating on the wall not only due to the sealing material, but also due to the air chamber formed between the double applied and sealed polyethylene membrane and polypropylene geotextile. Neither soil nor debris can block this system. Water is allowed to freely flow down to the geotextile covered micro-perforated pipe which allows drainage away from the structure.



31 Newtown Street
Bromley
CHRISTCHURCH 8062



P O Box 35-190
Shirley
CHRISTCHURCH 8640



www.sealco.co.nz



info@sealco.co.nz



0508 SEALCO