



**Sealco**  
Waterproofing Systems

# ARCHITECTURAL PRODUCT MANUAL



**DekMASTER® Vinyl Decking Membrane**

Version 19.01

# A Product Technical Statement

## Product Description

The SEALCO WATERPROOFING SYSTEMS Dek-Master Pro Vinyl Roofing System is a 1.5mm thick PVC sheet membrane designed for use on decks and flat roofs for residential and commercial buildings alike.

The system consists of Ducan RUBBER FILL-IT, Ducan Dek-Master (Exterior Contact) Adhesive, Ducan Overlap Cement, and Dek-Master Pro Vinyl sheet.

SEALCO WATERPROOFING SYSTEMS Ltd., has submitted technical information, NZ installation information, photos and a statement of compliance with the New Zealand Building Code, which this technical opinion is limited to. In addition information from the manufacturer covering the authorised installer, maintenance and a New Zealand Warranty of 15 years, has been submitted.

An assessment of the test data supplied by the manufacturer has been carried out by BEAL experts and found satisfactory.

## Specific Performance Requirements of the NZ Building Code

### Clause B2 - Durability

Based on the limits of this technical opinion and the information provided, the Dek-Master Vinyl Roofing System will meet the performance requirements of Clause B2.

### Clause E2 - External Moisture

Based on the limits of this technical opinion and the information provided, roofs and decks that comply with E2/AS1 except where noted here, incorporating the Dek-Master Vinyl Roofing System, will meet the performance requirements of Clause E2.

### Clause F2 - Hazardous Materials

Based on the limits of this technical opinion and the information provided, the Dek-Master Vinyl Roofing System will meet the performance requirements of Clause F2.

## Basis of the Opinion

### Clause B2 - Durability

Compliance with the performance requirements of Clause B2.3.2 (b) 15 years, was based on the test data supplied for the Dek-Master Vinyl Roofing System covering -

- Tensile strength
- Tear strength
- Adhesion to a substrate
- Burst resistance
- Low temperature flexibility
- UV resistance
- Mildew resistance
- Abrasion resistance
- Chemical/Stain resistance

### Clause E2 - External Moisture

Use of 'in-service history' and supplied test roofs were the basis for the opinion that, where roofs and decks incorporating the Dek-Master Pro Vinyl Roofing System, comply with E2/AS1 except where noted here, will meet the performance requirements of Clause E2

Though water vapour resistance is often required, this product is virtually a moisture barrier and as such utilises vents placed every 40 sq.m to allow for any moisture build-up to egress, Another often required assessment is the heat aging result. PVC is known from long term in-service history to be a stable product with little expansion/contraction.

### Clause F2 - Hazardous Materials

Based on the limits of this technical opinion and the information provided, the Dek-Master Pro Vinyl Roofing System will meet the performance requirements of Clause F2.

### Installation Skill Requirement

Installation of the Dek-Master Pro Vinyl Roofing System must be completed by SEALCO Waterproofing Systems Ltd. approved and trained applicators who have experience in the application of deck and roofing PVC sheet and knowledge of waterproofing principles.

Installation of the substrates must be completed by a suitably skilled tradesperson with an understanding of floors and walls construction in decks and roofs, in accordance with instructions given within The Dek-Master Pro Vinyl Roofing System Technical Literature.

## Reference Information

Manufacturer's test data covering testing according to ASTM test methods

Manufacturer's 15 Year Warranty Certificate for coverage in New Zealand

Compliance Document for New Zealand Building Code External Moisture Clause E2, Department of Building and Housing

New Zealand Building Code Handbook and Approved Documents, Building industry Authority, 1992.

The Building Regulations 1992, up to, and including October 2004 Amendment.

*NOTE: This Technical Opinion is based solely on the limited test data and trade literature supplied by the manufacturer and intended for use until a more comprehensive assessment and verification of compliance has been completed.*

### Authorised Signatory -



**C R Prouse - Principal Building Scientist**

25 June 2011

**Date of Update 10 October 2019**



# CONTENTS

---

Introduction	3
Installation	6
Detail Drawings	11



## THIS PUBLICATION

This manual provides the technical information necessary to correctly specify the DekMASTER®. It has also been designed for use by Sealco Waterproofing Ltd approved applicators, for training and quality management purposes.

This manual may also be used by main contractors and Building Consent Authorities (BCA's) for quality management and inspection purposes.

Version 19.01

## NOTE TO APPLICATORS

As a Sealco approved applicator you are required to comply fully with the contents of this manual. Where a specific situation arises on a particular project that makes it difficult for you to follow the published procedure or comply with a particular detail drawing, you are required to communicate this to Sealco for an approval solution.

## TRADEMARKS

FlameSEAL, WarmSEAL, GreenSEAL, EpiSPAN®, EcoTUFF®, DekMASTER®, are registered trademarks of Sealco Waterproofing.

## COPYRIGHT

Copyright© 2005 - 2019 Sealco Ltd. All rights reserved. No part of this publication may be copied, reproduced by any means, or amended in any way without prior written permission from Sealco Ltd.

### FOR FURTHER INFORMATION, CONTACT: SEALCO LTD

P: (0508) SEALCO  
E: [admin@sealco.co.nz](mailto:admin@sealco.co.nz)  
[www.sealco.co.nz](http://www.sealco.co.nz)

### BRANCHES:

Auckland  
Christchurch

## USING THE ICONS

Four different visual icons have been created for this manual to draw the reader's attention to important pieces of information.



- 1. QUALITY CONTROL ICON**  
Information about warranties, quality control checks and related information.



- 2. USEFUL TIPS ICON**  
Helpful advice to make the applicator's job easier and successful installation more likely.



- 3. CRITICAL ICON**  
Vital information about the system and installation methodology. It is crucial that the specifier and/or applicator are aware of these facts.



- 4. HEALTH & SAFETY ICON**  
Information about the importance of safety checks and ensuring that the work environment is always safe with potential hazards identified and minimised.

## BEAL TECHNICAL OPINION

The DekMASTER® system has BEAL Technical Opinion in reference to the compliance with Clauses B2, E2 and Clause F2 of the New Zealand Building Code and found that the Sealco DekMaster® system will meet all the Specific Performance Requirements of the New Zealand Building Code and complies with E2/AS1 Alternative Solution.

Please contact [Sealco Waterproofing Ltd](http://Sealco Waterproofing Ltd) for a copy of this BEAL Technical Opinion.

You can also download the BEAL Technical Opinion on our website: [www.sealco.co.nz](http://www.sealco.co.nz)



## PRODUCT DESCRIPTION

DekMASTER® is a high quality, fully cured vinyl resin material impregnated onto a non-woven polyester fabric back. DekMASTER® is an aesthetic trafficable and waterproofing membrane all-in-one and is the best trafficable PVC waterproof membrane available in New Zealand. It will protect your home and provide a watertight exposed deck membrane system.

## WHY DEKMASTER®

### WATERPROOFING

DekMASTER® will prevent moisture entering into timber substrates therefore preventing timber rot and other related water issues. Both DekMASTER® vinyl and the adhesives are waterproof, giving you a secure watertight and trafficable deck.

### NON-SLIP SAFETY

The embossed pattern of the vinyl offers excellent non-slip properties, providing sure footing even when wet.

### LOW MAINTENANCE

DekMASTER® eliminates the need to paint or stain wooden decks each year. It also eliminates the hazards of wood splintering.

### EASY TO KEEP CLEAN

Vinyl has properties that resist mildew and rot, mild acids and alkaline spills, and successfully repel most stain causing products; including sulphides from acid rain. Sealco recommends cleaning with a stiff brush. For exterior applications wash with water and Duke cleaner and use wet vacuum system.

### COOLER TO TOUCH

DekMASTER® vinyl's embossed, textured surface and reflective colour pattern helps make it only slightly warmer than the air temperature under direct sunlight.

## AREAS OF USE

DekMASTER® is used for external decks over plywood, concrete, compressed fibre cement board, existing fibreglass and aged acrylics, and is ideal for sundecks, balconies, walkways, roof top decks. DekMASTER® is also used in a variety of internal bathrooms including wheelchair access wet areas.

### DekMASTER® SPECIFICATIONS

Membrane Thickness	1.5mm
Roll Width	1.84m
Roll Length	22.86 LM
Water Absorption	2.6 ASTM 570. MAX 3.0
Water Vapour	Pass ASTM E96. MAX 4.0
Chemical Stain Resistance	Pass ASTM D2195
Abrasion Resistance	Pass ASTM D460
Breaking Strength	ASTM D751
Low Temperature Flexibility	Pass -40C ASTM D2136

## DURABILITY

When fixed according to specification, the DekMASTER® system will meet the NZBC B2.3.1 (b) requirements of 15 year durability. DekMASTER® meets the CGSB Specifications and 37-GP-54M standards required by the Department of Building & Housing E2/AS1 Alternative Solution.

The durability opinion given by BEAL states that when subjected to normal conditions of environment and use, DekMASTER® is expected to have a service life of at least 20 years.

Case histories of the DekMASTER® system plus thermal ageing and ozone testing indicates the DekMASTER® system is durable for in excess of 20 years.

## DEKMASTER® VINYL PRODUCT RANGE

Sealco DekMASTER® PVC is available in the following range.

Thickness: 1.50mm  
 Width: 1.84m  
 Length: 22.8m

Colours:



Canyon Grey



Fieldstone

## PRODUCT OVERVIEW

### DEKMASTER® ADHESIVE PRO-SERIES WATER BASED ADHESIVE

Used for adhering Sealco DekMASTER® vinyl's, this adhesive has an immediate superior tack for high performance installations of DekMASTER® fabric backed vinyl's and other types of carpet and resilient tiles. Solvent free, water clean up, little shrinkage, low odour and flexible in extreme cold weather. Supplied in 19 litre pails.

### DEKMASTER® ADHESIVE LOW TEMP VINYL ADHESIVE

DekMASTER® Adhesive Low Temp is neoprene based contact adhesive with exceptional user friendly characteristics for installations that must occur during colder temperatures (5°C to 15°C). For exterior use only, it is waterproof, has a high rubber content and is flexible in extreme cold weather. Supplied in 19 litre pails.



DekMASTER® Low Temp Vinyl Adhesive and DekMASTER® Trim Adhesive are flammable and must be stored, transported and used with care. Refer to the Material Safety Data Sheets for further information.

### DEKMASTER® TRIM ADHESIVE

A solvent based neoprene adhesive especially formulated for adhering DekMASTER® PVC to metal Trims

### DEK-PATCH JOINT FILLER COMPOUND

A modified cement based compound for filling and levelling plywood joints, screw holes, transitions between wood and flashing or cant strip. Easy to apply, fast dry time, sandable, mixes easily with 2 parts Dek-Patch, 1 part water. Available in 1 Litre and 4 Litre Tins (Spread rate 1sqm per Litre.)

### DEKMASTER® DUCA-FLEX CAULKING

A heavily bodied waterproof rubber caulk, this product is used for caulking around posts and against the house. Waterproof, permanently flexible, paintable, easy to apply and unaffected by weather. Available in 300ml tubes (Approx. 6 lineal meters per tube) with grey and beige colours available.

### DEKMASTER® U CHANEL

Easy to install friction fit. Adds a great look to the deck. Simply clip over vinyl and flashing edge. Prevents curling of vinyl from the edge of the flashing as well as giving you a safety edge. Available in White, Beige and Grey colours with a length size of 1.80m.

### DEKMASTER® GALVANISED NON-RETURN DRIP FLASHING

90 degree - 30 gauge galvanized metal flashing with a non return drip edge will protect plywood from rain and moisture, and kicks water away allowing the fascia board to stay dry. Simply nail down 1/4" off the fascia board around the outside perimeter of the deck. Will not rust, or warp. Available in 1.8m lengths for easy handling and installation.



The shelf life of these products is affected by the storage temperature. To gain maximum shelf life, ensure products are stored in a COOL dry place. DO NOT leave out on roofs or other areas exposed to heat and sunlight.




## STORAGE

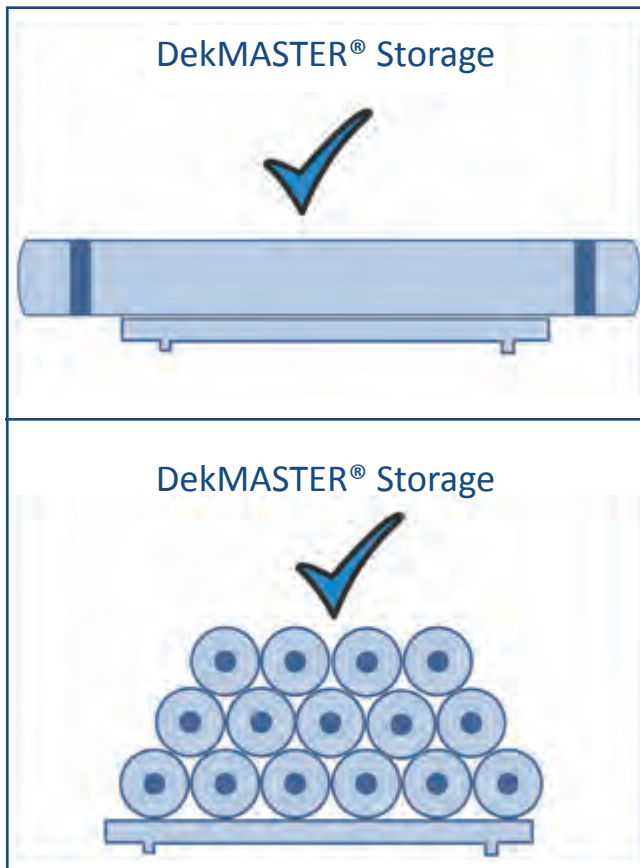
All DekMASTER® rolls must be stored flat, on an even surface in a ventilated area. Primers and adhesives must be stored in an horizontal position.

The shelf life of the adhesives and tapes is determined by the conditions of storage, the higher the storage temperature the shorter the shelf life.

Primers and adhesives must be stored in cool conditions away from heat and direct sunlight.



Before installation, the DekMASTER® membrane must be unrolled and relaxed for 20 minutes, to relieve stresses through manufacture, packaging and storage.



DekMASTER® Storage

DekMASTER® Storage

## HEALTH & SAFETY

The primers, adhesives and sealants used in the DekMASTER® system are Class 3 flammable goods. Contractors should be aware of the Health & Safety precautions identified in the Material Safety Data Sheets.

Ensure you display appropriate signage, as shown below. Keep well away from flame and heat sources and use only in ventilated areas with suitable safety equipment.



## WEATHER

The DekMASTER® system should be installed in dry conditions. Note that a temperature of at least 10°C is required before laying the membrane and the substrate must have a maximum moisture content of 20% at the time of laying.

The “tack off” time for the DekMASTER® adhesive will be extended when installing in cooler conditions, or when the humidity is high.

## STAINING OF DEKMASTER®

To avoid staining of DekMASTER®, care is required during design to ensure water running off some timber (e.g. quilla) and metal (e.g. copper) is avoided.

## QUALITY CONTROL AND INSPECTIONS.

Quality control & inspection forms are downloadable from our website [www.sealco.co.nz](http://www.sealco.co.nz)

## PLANNING

Plan the deck project well ahead and make sure all materials for construction and finishing are on hand. Keep timber dry. Build and finish only during a dry spell.

## CONSTRUCTION

DekMASTER® should only be applied on solidly constructed decks. Exterior grade 17mm CCA plywood or concrete is required.

## LAP JOINTS

Overlaps may be run parallel or perpendicular to the wall with equal success. It is up to the consumer to sketch accurately and measure the deck in order to decide on the most economical way to lay the DekMASTER® vinyl sheet.

## TOOLS AND SUPPLIES

- 9" Short Nap Roller Sleeve
- 9" Roller Frame
- Extension Handle
- 3" Bristle Brush
- 3" Putty Knife
- Razor Knife & Scissors
- Seam Roller
- Heavy Roller
- Drop Sheet (to prevent spilling)
- 25mm Masking Tape (if overlap required)
- Leister Hot Air Welding Gun
- Lap Roller

## ESTIMATE MATERIALS REQUIRED PER 16SQM OF DECK

- Sealco DekMASTER® Vinyl
- 2 Litres Ducan Trim Adhesive
- 1 Litre Ducan SPECIAL THINNER for clean up of tools
- 10 Litres DekMASTER® Adhesive
- 1 pail of deck patch
- 1 roll of 38m PVC masking tape for plywood joints



## SUBSTRATE PREPARATION

The substrate to which the membrane system is installed is a significant factor that determines the performance of the system. A belt sander should be used to smooth the areas around the screw fixings where wooden splints can damage the membrane. Sheet joints should be sanded flush where required. All holes must be filled with DekPATCH (timber substrates) or repair mortar (concrete substrates) which must be sanded off smooth.

Ensure that all plywood sheets are securely fixed and tight butted. Mitres should also be neatly formed.

On concrete substrates, ensure the concrete is fully cured, firm and smooth, and that any loose surface concrete or latescence is removed. Repair any cracks or voids and remove any lumps or protrusions.

Use a vacuum cleaner or leaf blower to carefully remove all dirt/dust and surface contamination. Acid etching may also be required where the concrete surface is unsuitable for laying.

Sealco recommends that concrete surfaces are primed with 50/50 cut back primer to give an adequate surface on which to install the membrane.

## SUBSTRATES

### CONCRETE SUBSTRATE SHOULD:

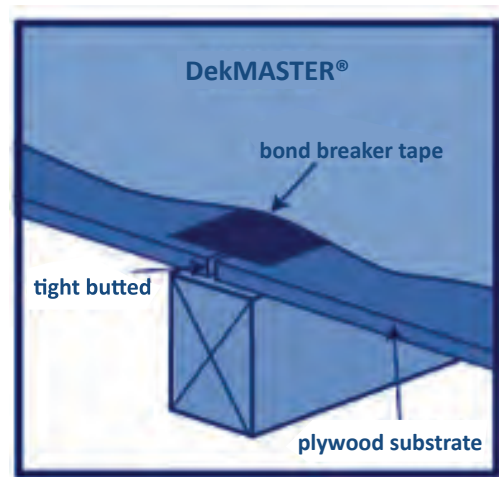
- Have cured for a minimum of 28 days and any curing compounds removed before membrane application.
- Be smooth, clean and thoroughly dry.
- Have all soft areas ground off.
- Have all cracks or imperfections fixed using repair mortar.
- Mortar fillets are **NOT** required.
- Have all external edges chamfered to 5mm radius to remove sharp edges.
- Have adequate falls to outlets.
- Set to minimum falls of 1.5° slope (1:40) for decks.
- Set to minimum falls of 1.0° slope (1:100) for gutters.



Roofers must wear flat-soled shoes to reduce possible footprints on the membrane.

### PLYWOOD SUBSTRATE SHOULD:

- Be CD structural grade plywood with sanded c-face upwards, H3.2 CCA treated and kiln dried.
- Be a minimum of 17.0mm thick and complying with AS/NZS2269.
- Be laid in a staggered pattern (offset all plywood sheets with all edges supported and tight butted).
- Be face grain laid at right angles to supports or cross members.
- Set to minimum falls of 1.5° slope (1:40) for decks.
- Set to minimum falls of 1.0° slope (1:100) for gutters.
- Be fixed at 150mm centres at sheet edges and 200mm in the girth.
- Be fixed with corrosion-resistant stainless steel countersunk screws (10 gauge x 50mm).
- Be smooth, clean and dry (**maximum moisture content of 20%**), and all lip edges sanded if necessary.
- Be tight fitted with external corners chamfered to rounded edge (5mm radius).
- Internal angle fillets are **NOT** required.



*Plywood Substrate*



LOSP treated plywood must not be used with DekMASTER® under any circumstances.

## INSTALLATION INSTRUCTIONS

### READ ALL DIRECTIONS BEFORE BEGINNING



In inclement conditions, the plywood must be kept dry. Make a barrier by suspending a tarp at least 600mm from the deck surface. Hint: use the roof fascia.



Do not apply adhesive when the deck is hot to the touch from direct sunlight.



Do not install Sealco DekMASTER® vinyl sheeting on pressure treated lumber. K-3 board, particle board and OSB are not recognised as suitable exterior sub-floor materials.



Sealco does not warrant DekMASTER® on stairs.

## INSTALLATION

Carefully sweep off the deck surface and make sure it is free of all debris. Any imperfections will telegraph through. Vacuum all plywood joints and indentations.

Install galvanised metal drip flashing to protect the edges of the plywood from moisture and to act as an attachment area for the vinyl. Install 50mm non-return flashing around the exterior perimeter of the deck surface 8mm away from the edge of the plywood using 30mm galvanised ring nails, starting from the centre and working the way out to the ends.



It is always preferable to run the vinyl up the cant strip or flashing and under the cladding and building.

Install galvanized metal flashing to protect the edges of the plywood from moisture and to act as an attachment area for the vinyl. Install 50mm non-return flashing around the perimeter of the deck surface 8mm away from the edge of the plywood using 30mm galvanized ring nails, starting from the center and work the way out to the ends.

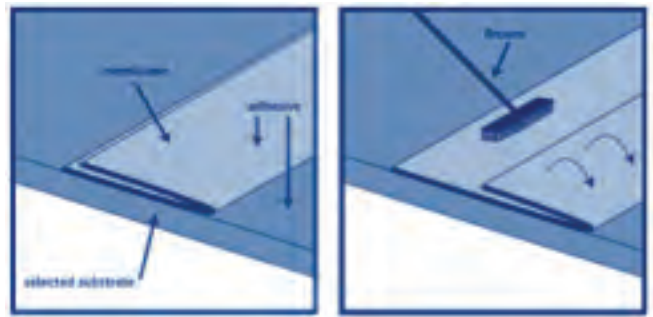
Once cant strip and non-return drip flashing have been nailed to the deck, fill all joints and surface imperfections with DekMASTER® Dek-Patch jointv filler and patching compound. Follow mixing instructions on the label. Fill all joints, screw indentations, surface imperfections and transition of cant strip and flashing to the deck surface. It is important when leveling out the flashing or cant strip edge that the Dek-Patch doesn't build up on the top surface. To avoid grinding or sanding, just before the Dek-Patch hardens scrape off excess with the trowel. The surface is now prepared and ready to install the waterproof DekMASTER® sheet vinyl.



Do not allow the Dek-Patch to freeze for 24 hours. DO NOT ALLOW DEK-PATCH TO GET WET.

The pattern of the vinyl is directional. Lay each sheet in the same direction. Lay out DekMASTER® vinyl to ensure the fewest possible seams. Start from the lowest point from the drip edge or wall and allow 25mm to 50mm of vinyl to go over the flashing and for a threshold upstand of 150mm. Adjust the vinyl sheet to ensure it is parallel to the wall and/or deck edge.

Fold vinyl sheet back half its width and first apply DekMASTER® Pro Contact Adhesive to the deck surface, secondly to the back side (fleece side) of the vinyl.



Colour variances from batch to batch are common. Sealco will not be responsible for any material applied from two separate rolls.




To be sure the vinyl is square on the deck, draw a chalk line in pencil so that when you unroll the vinyl you can be sure that the sheets are square on the deck surface.




Both surfaces must have a complete even coat of adhesive (Pro Solvent Based Adhesive). Let the adhesive dry until tacky. Test the tack by placing a finger to the adhesive coated back side (fleece side) of the vinyl. Adhesive should be stringy between at the back side of the vinyl.

Push adhesive coated vinyl sheet down onto the deck surface by working from the middle point to the edge of the deck, then outwards to the ends. (If using Pro Water Based Adhesive use more pressure to push the vinyl into the glue).



Sealco recommends smoothing the vinyl down. If an air bubble forms in the vinyl, smooth it out with your palms to remove it. If you find you are acquiring air bubbles under the vinyl this could be from temperature or too much adhesive. Push the bubbles down. Most likely after a few days they will go down and stay down on their own.



Use of a roller or rolling pin can cause stretching of the vinyl. **DO NOT USE.**


## WHEN TO APPLY

Temperatures between 10°C and 25°C are best. The plywood surface must be clean and dry, with no more than 20% moisture content. Do not apply to pressure treated timber.

Remove tacks or staples and fold the vinyl sheet back as shown at left. Apply Sealco DekMASTER® Pro Contact Adhesive to the back of the vinyl first (fleece side), then to the deck surface

Push adhesive coated vinyl sheet down onto the deck surface by working from the middle point to the edge of the deck, then outwards to the ends.

Subsequent DekMASTER® sheets must be overlapped 25mm to the adhered vinyl sheets. To prepare subsequent sheets, place a piece of 25mm masking tape to the underside edge (fuzzy side) where the overlap will be. It is necessary to follow this step to ensure the adhesive does not interfere with the Hot Air Welding process. This tape will be removed prior to completion of the Hot Air Welding.



Be careful walking on the vinyl, avoid twisting too fast as the adhesive may not be completely set.

Install 25mm masking tape on the edge of the first panel (patterned side). This will protect the vinyl against any adhesive that may end up on it. It will also act as a guide for sliding the corresponding sheet over to achieve the necessary 25mm overlap. This tape will be removed prior to completion of the Hot Air Welding.

Follow the same procedure as previously for the first panel installation flipping the sheet over half way, adhering and then folding back the other half in the same way. Use waxed paper to protect the lower DekMASTER® sheet while gluing the second one. Do not glue the vinyl to the cant strip at the same time on the final sheet. The vinyl may pull away as it dries leaving a hollow area under it without being attached.

## FINISHING

### HOT AIR WELDING

Lap joints must be a minimum of 25mm to 30mm and be fully heat welded. Remove the temporary tacks or staples and the two strips of 25mm masking tape and make sure there is no Pro Contact Adhesive residue in the overlap area before proceeding. Sealco offers the hot air welder along with a DVD for those wishing to use this method. Please contact Sealco Customer Service at: 0508 SEALCO



Sealco strongly recommends repeated practice prior to working on the actual deck seams. The more practice the more professional the deck will look and the more water tight the seal.



Do not use excessive pressure with the seam roller as this could distort the vinyl layer.

## FINISHING

Once the deck surface is completely sealed it's time to prepare for the vinyl attachment to the flashings and cant strip.

### TRIMMING CANT STRIP

If not installing up the wall and under the cladding use a razor knife to trim vinyl sheet to 6mm above the flashing strip. Make sure the vinyl is completely adhered to the cant strip by using DekMASTER® Pro Contact Adhesive. With a small brush suitable for enamel paints apply a coat of DekMASTER® Pro Contact Adhesive to the cant strip and onto the back of the vinyl. Tightly push the vinyl against the cant strip to make sure it is well adhered. Tuck the extra vinyl down between the wall and the cant strip then caulk along the top edge using Duca-Flex Caulking.

If installing up the wall adhere vinyl to the flashing strip or flashing then up the wall 150mm to 200mm. Vinyl can be stapled or tacked on the upper edge to keep it from moving when installing the siding.



Do not use silicon or latex based caulking as they are incompatible.

## FINISHING FLASHINGS AND EXTERNAL CORNERS

With a razor knife, trim the vinyl flush with the edge of the flashing.

At the corners, cut the vinyl from the outside edge to the deck corner in line with one edge. With a small brush suitable for enamel paints apply a coat of DekMASTER® Pro Contact Adhesive to the flashings and onto the back of the vinyl. Be sure to keep the adhesive off the corner areas where the Hot Air Welding Gun or Overlap Cement will be adhering the corner flap. Tightly push the vinyl against the flashing to make sure it is well adhered.

### METHOD

Fold the outside corner flap around the corner first, then pull the top flap over the first. Hot Air Weld the top flap to secure to the flap beneath.

## U CHANNEL INSTALLATION

Install the U-Channel deck clips over the edge of the vinyl covered flashing to complete the DekMASTER® vinyl installation.

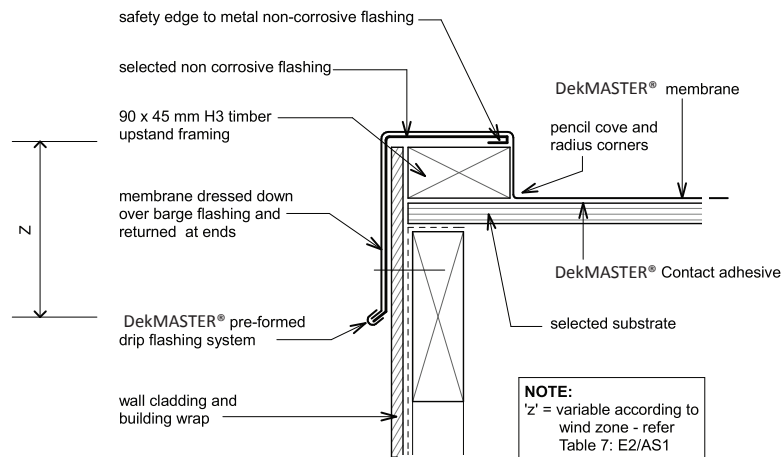


Apply DekMASTER® sealant along the junction of the DekMASTER® membrane and the PVC termination U-Channel.



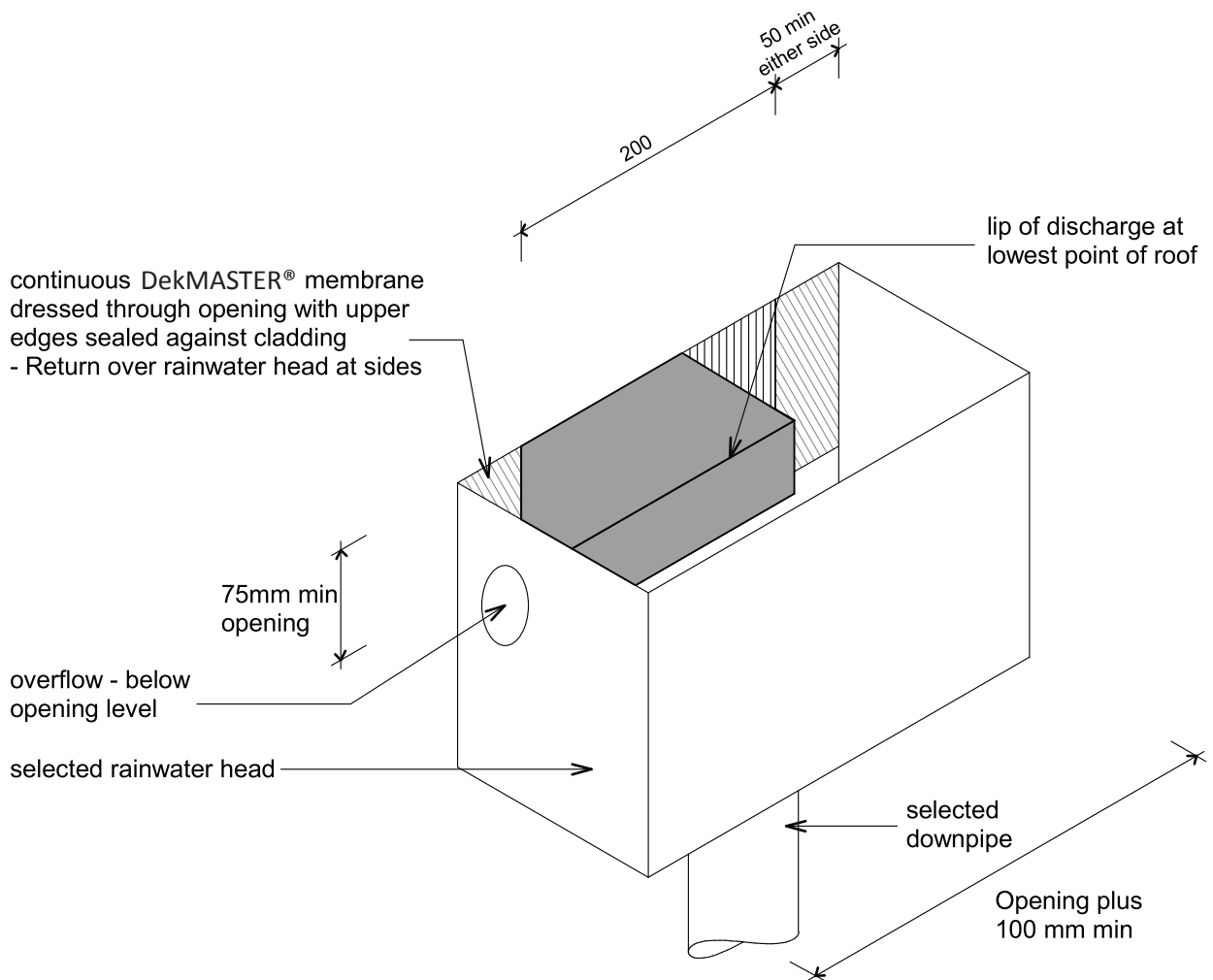
From time to time you may run into a situation that is different from the instructions above. If in doubt please call: 0508 SEALCO

# Detail Drawings



## dek-M03 - Barge Board 1

REVISION: 28 JULY 2014

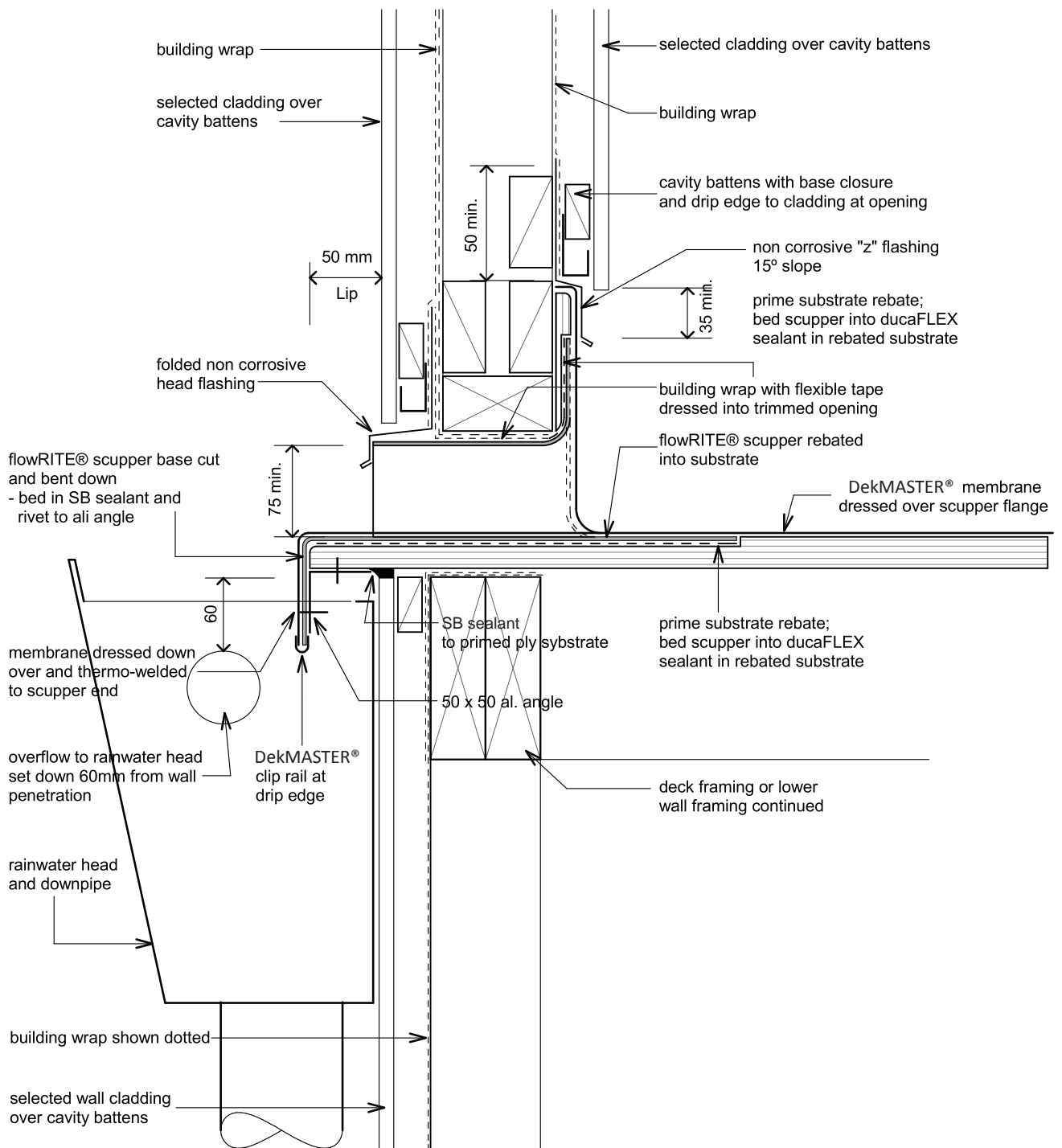


## dek-M04 - Rainwater Head Scupper Outlet

REVISION: 28 JULY 2014



# Detail Drawings

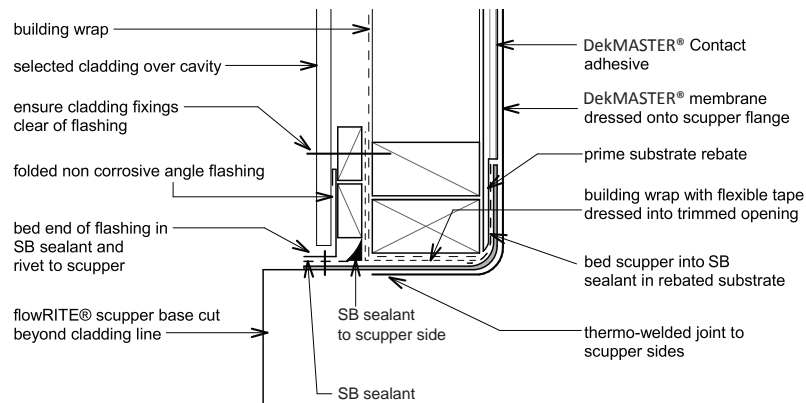


dek-M05 - Outlet Scupper Section 1

REVISION: 28 JULY 2014

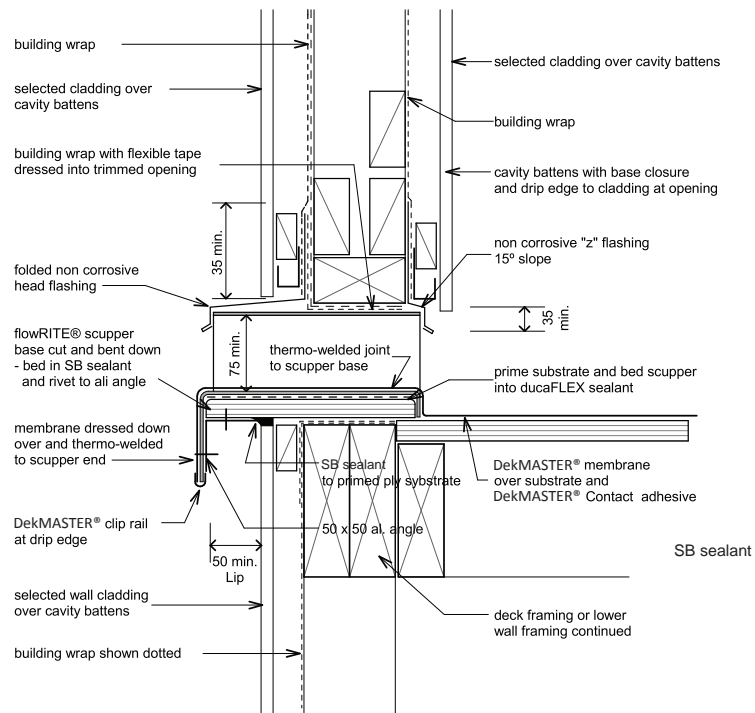


# Detail Drawings



## dek-M06 - Outlet Scupper Plan 1

REVISION: 28 JULY 2014

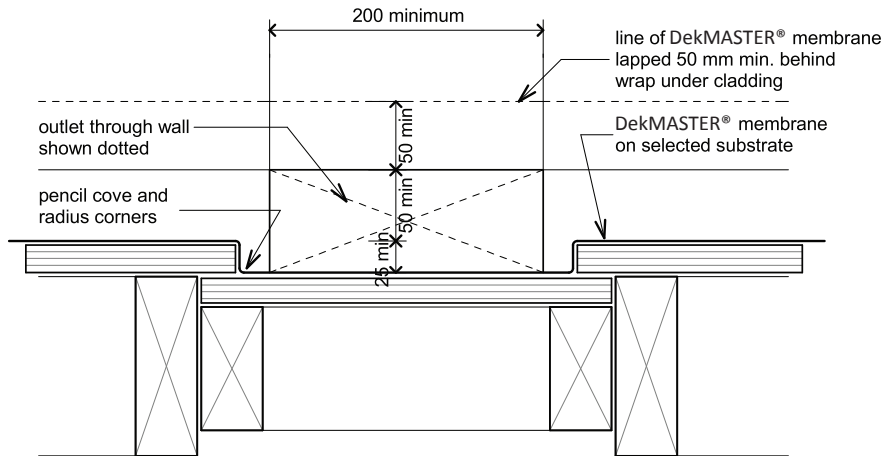


## dek-M07- Overflow Scupper Section 1

REVISION: 28 JULY 2014

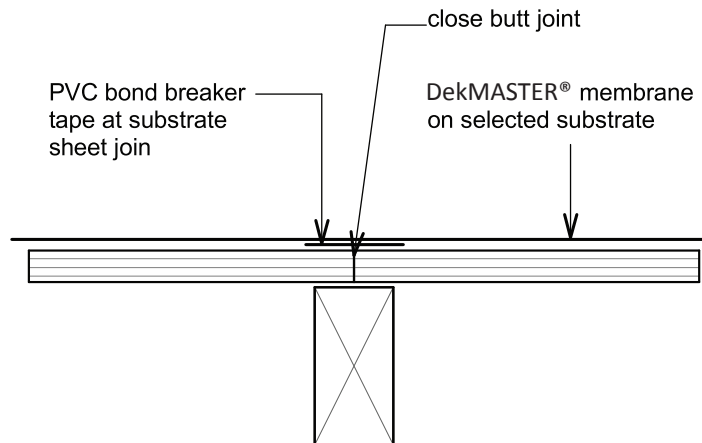


# Detail Drawings



**dek-M08 - Overflow Scupper Section 2**

REVISION: 28 JULY 2014



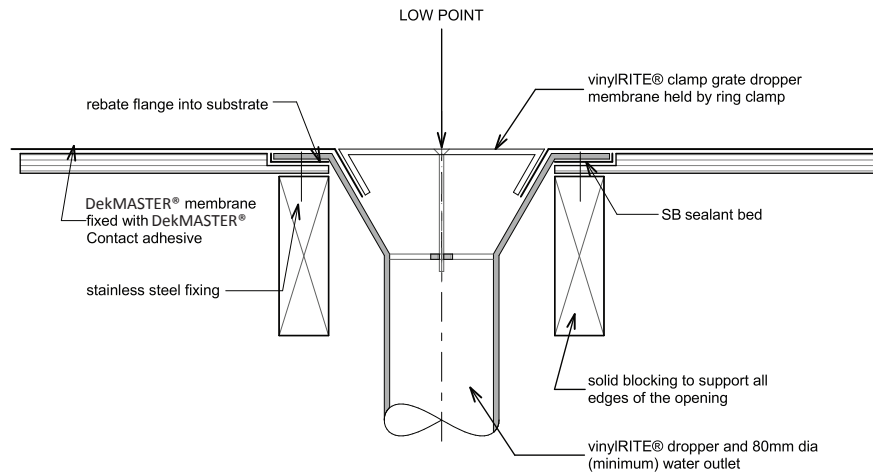
**dek-M10 - Substrate Join**

REVISION: 28 JULY 2014



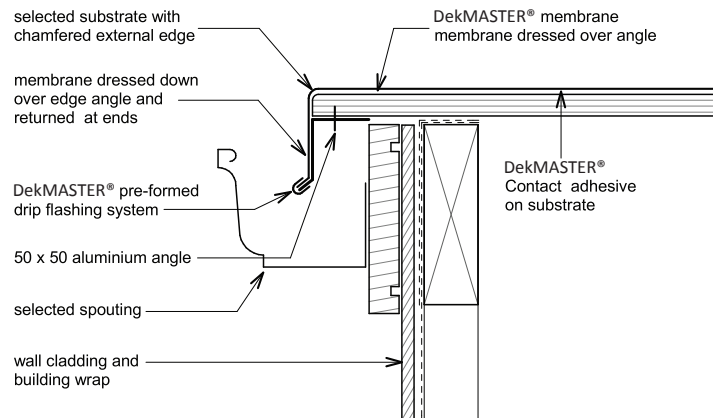


# Detail Drawings



## dek-M14 - vinylRITE water outlet

REVISION: 28 JULY 2014

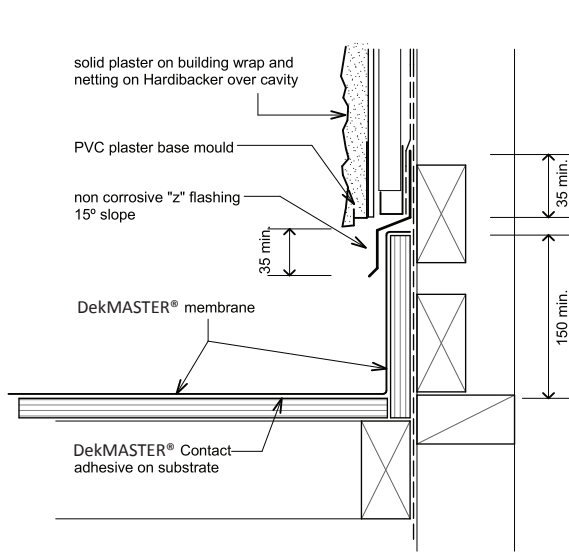


## dek-M16 - External Gutter 2

REVISION: 28 JULY 2014

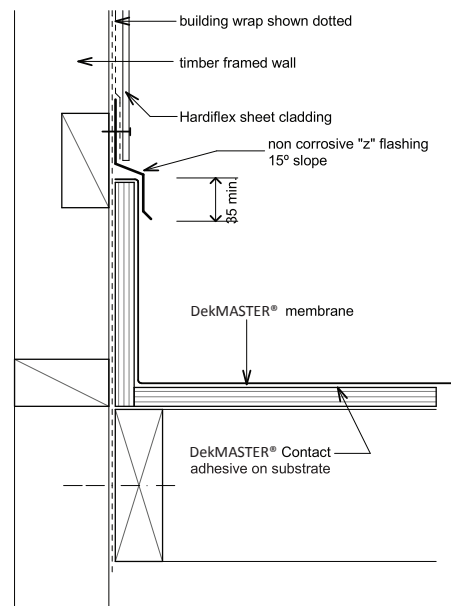


# Detail Drawings



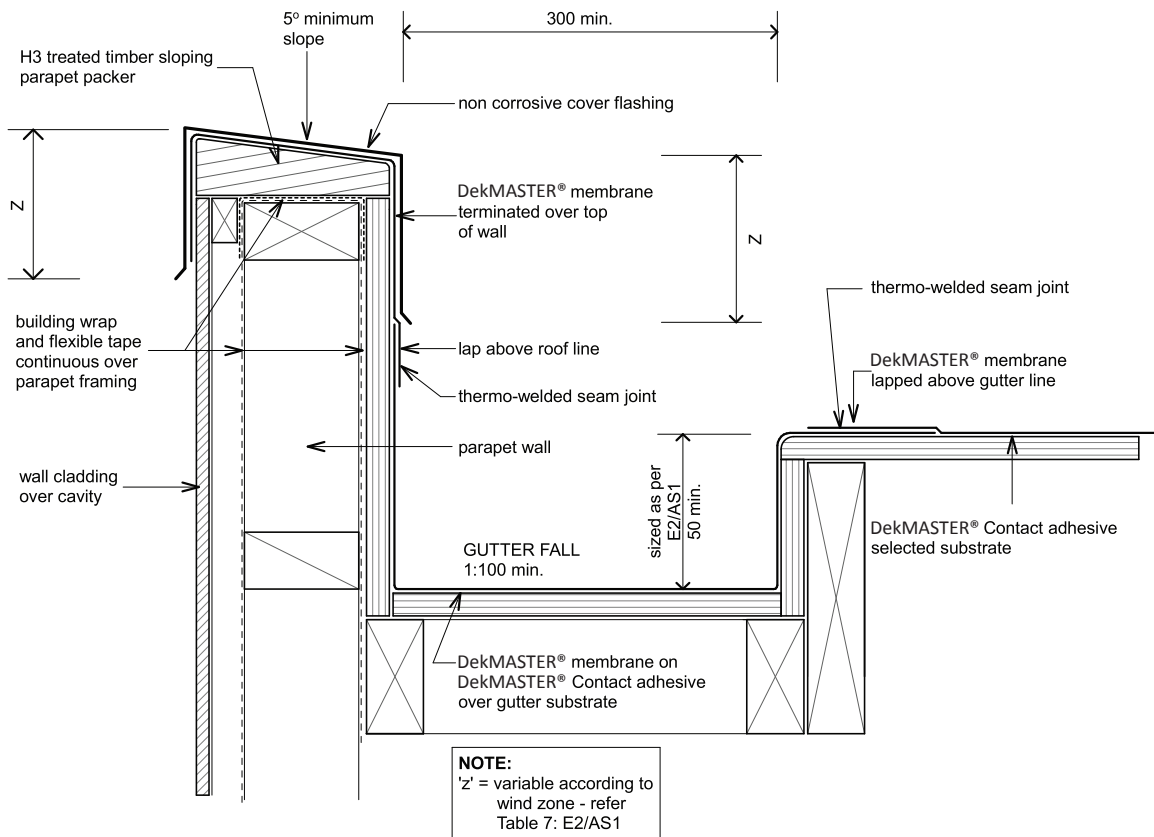
**dek-M17 - Deck/Wall 1 - Cladding over Cavity**

REVISION: 28 JULY 2014



**dek-M18 - Deck/Wall 2 - Direct Fix Cladding**

REVISION: 28 J

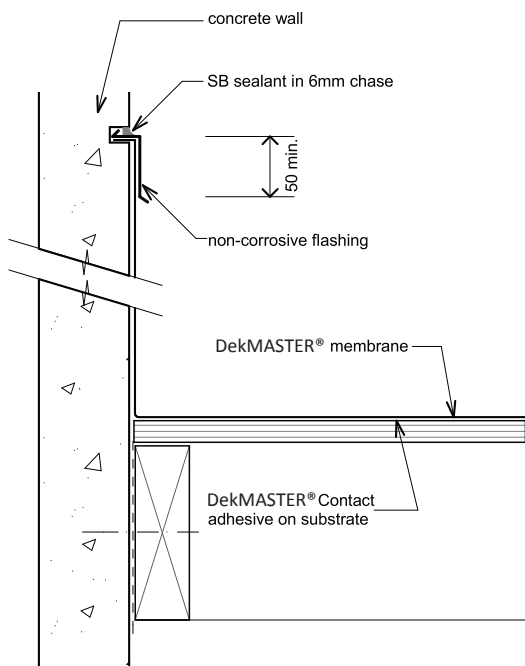


**dek-M19 - Deck-Gutter Parapet**

REVISION: 28 JULY 2014

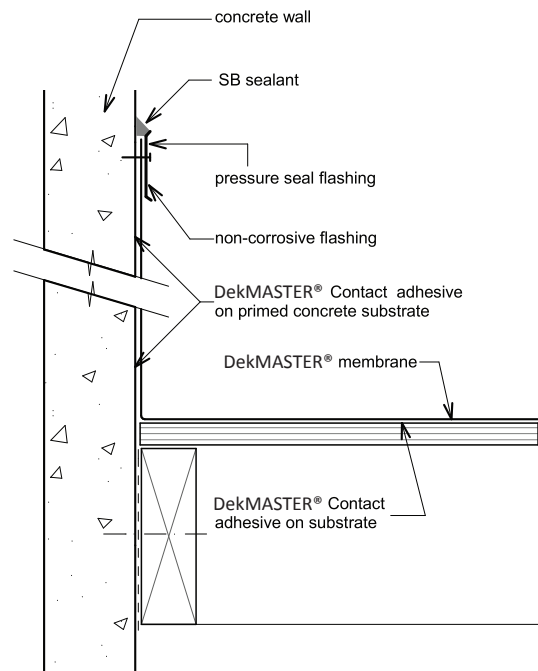


# Detail Drawings



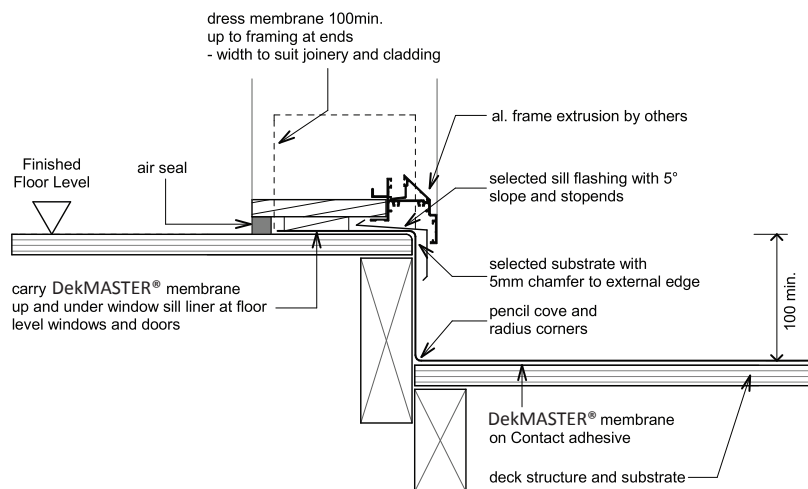
**dek-M23 - Chase Termination**

REVISION: 28 JULY 2014



**dek-M24 - Compress Termination**

REVISION: 28 JULY 2014

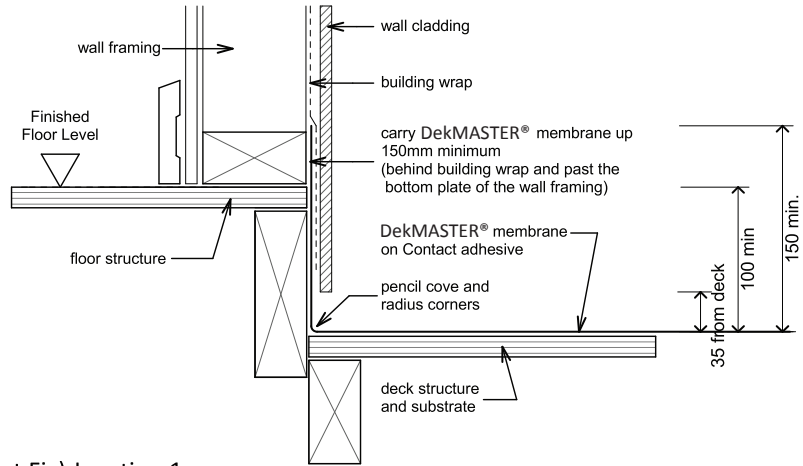


**dek-M25 - Deck Al. Threshold 1**

REVISION: 28 JULY 2014

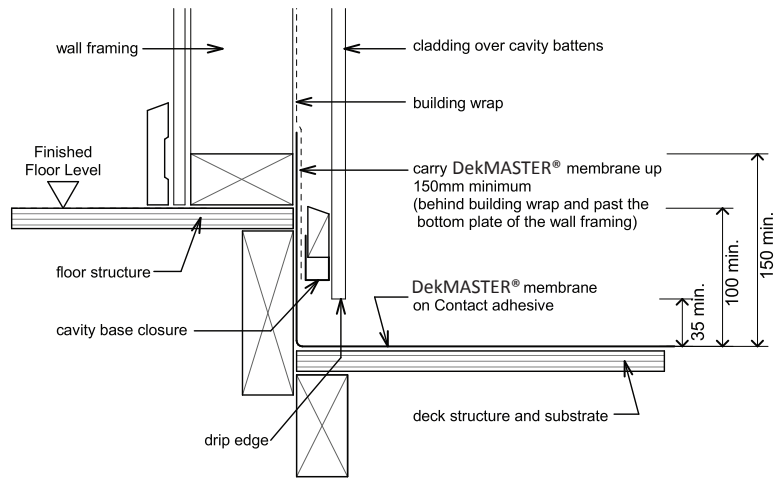


# Detail Drawings



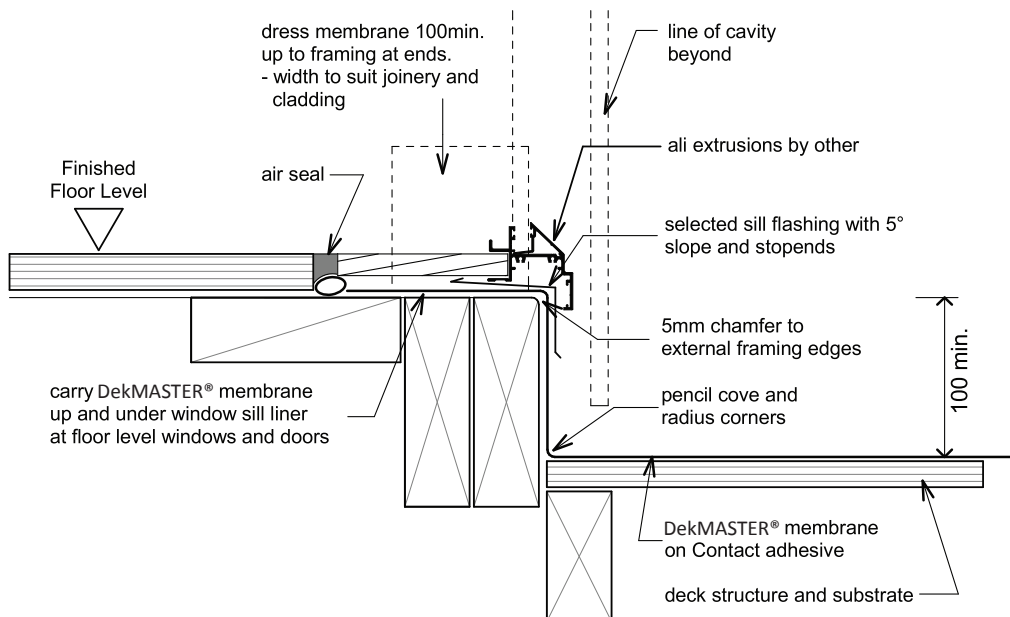
**dek-M26 - Deck/Wall (Direct Fix) Junction 1**

REVISION: 28 JULY 2014



**dek-M27 - Deck/Wall (Cavity) Junction 2**

REVISION: 28 JULY 2014

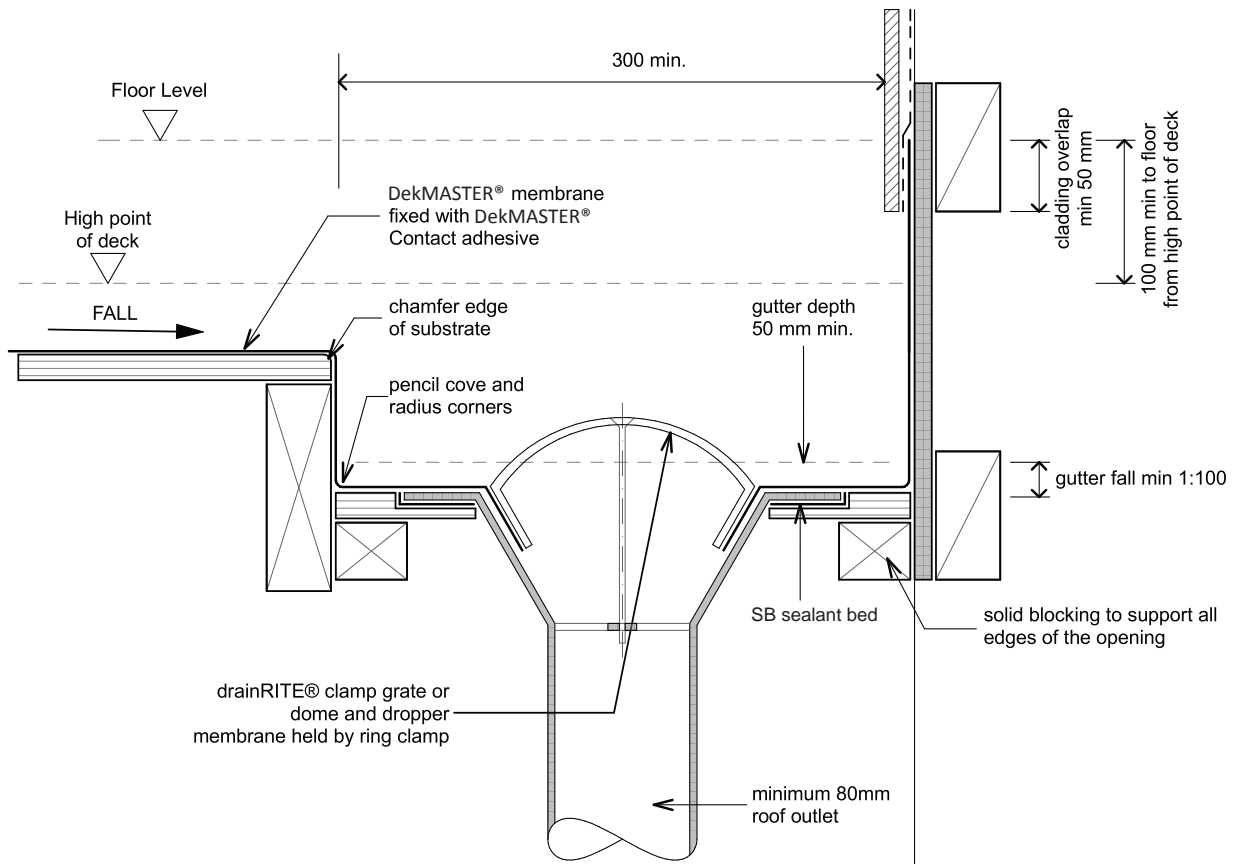


**dek-M28 - Deck Al. Threshold 2**

REVISION: 28 JULY 2014



# Detail Drawings

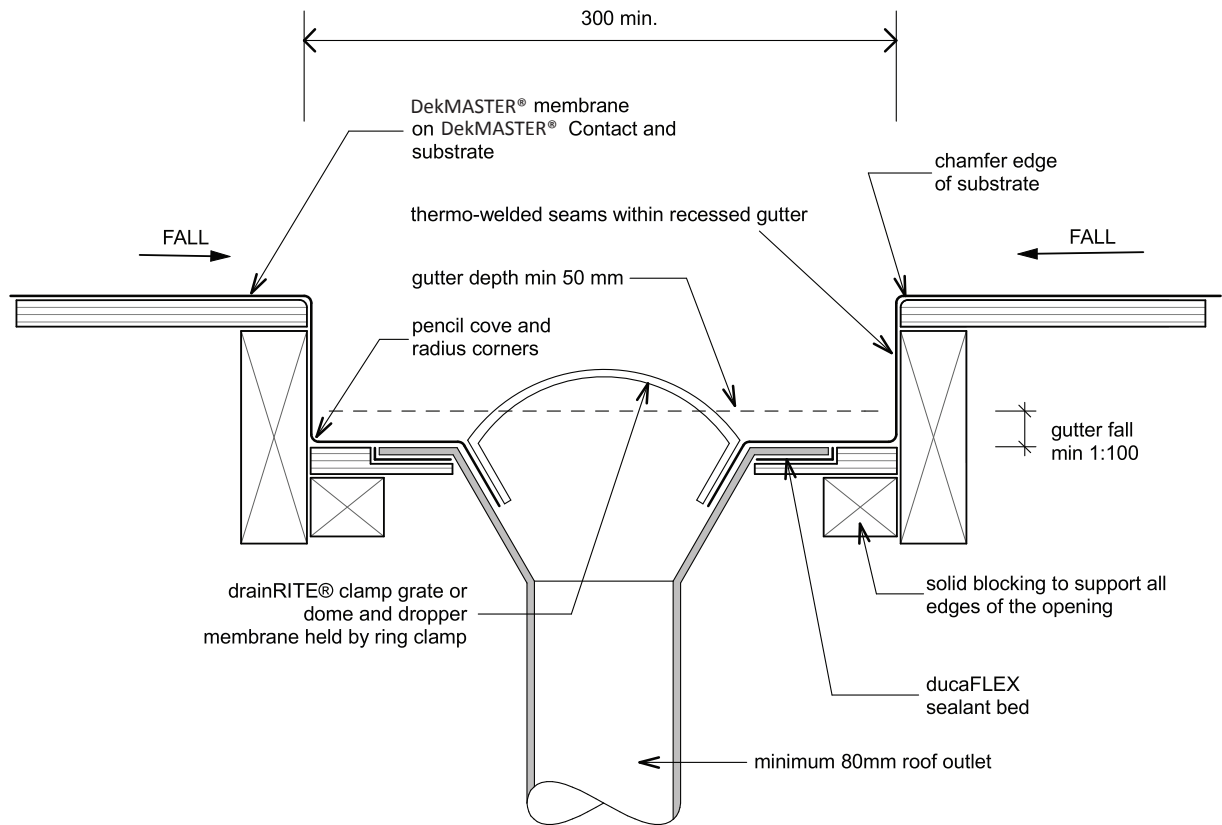


**dek-M30 - Deck Drain 2**

REVISION: 28 JULY 2014



# Detail Drawings



dek-M31 - Deck Drain 3

REVISION: 28 JULY 2014







Sealco Waterproofing Ltd  
Head Office: 52 Kennaway Road, Woolston, Christchurch  
Phone: 0508 SEALCO  
Fax: 03 366 9496  
Email: [info@sealco.co.nz](mailto:info@sealco.co.nz)  
Web: [www.sealco.co.nz](http://www.sealco.co.nz)